



# GMT MONTHLY MEMBERSHIP PROGRESS REPORT

Results as of: 6/30/2025

Multiple District 305

LOCATION: PAKISTAN

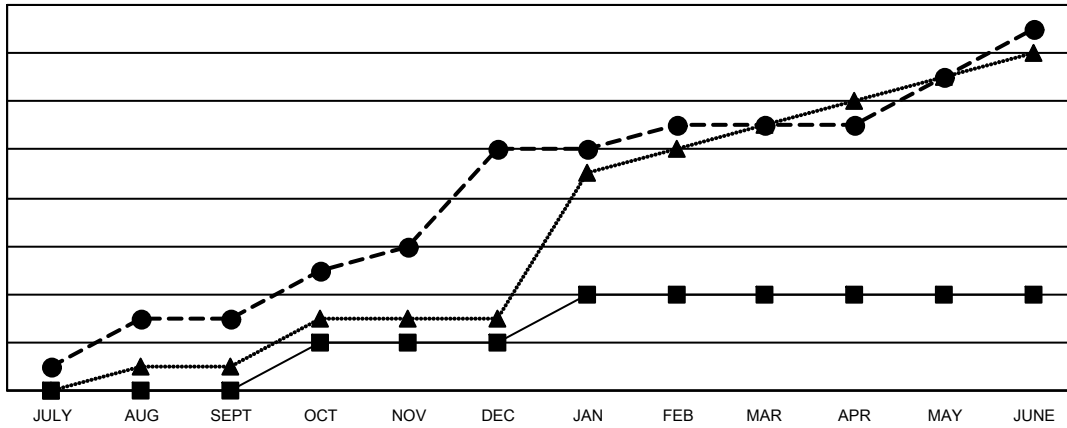
GMT: OPEN

GMT CA 6 - S

| Clubs                 |               |           |               |
|-----------------------|---------------|-----------|---------------|
| RESULTS FOR 2024-2025 |               |           |               |
| QUARTER               | NEW CLUB GOAL | NEW CLUBS | DROPPED CLUBS |
| JULY/AUG/SEPT         | 0             | 3         | 6             |
| OCT/NOV/DEC           | 2             | 7         | 6             |
| JAN/FEB/MAR           | 2             | 1         | 0             |
| APR/MAY/JUNE          | 0             | 4         | 7             |

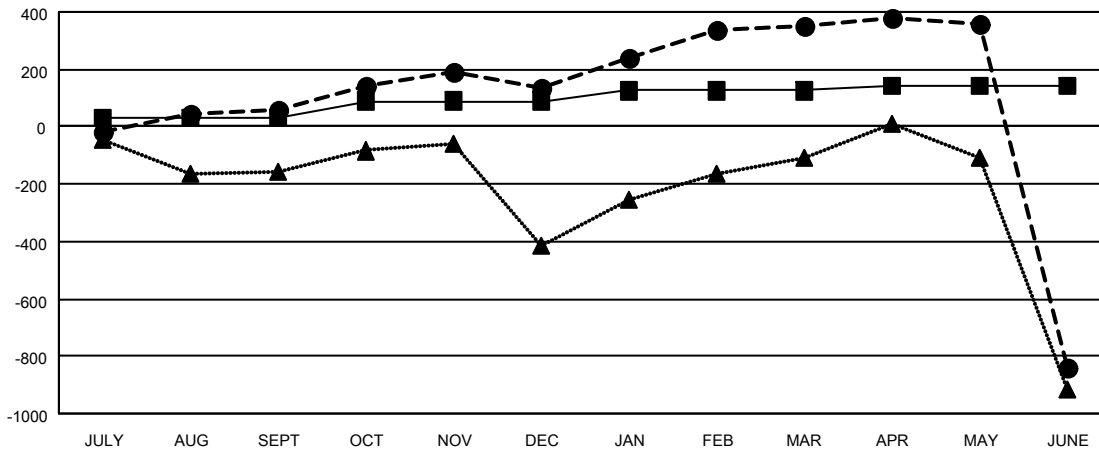
| Members               |                        |                      |  |
|-----------------------|------------------------|----------------------|--|
| RESULTS FOR 2024-2025 |                        |                      |  |
| QUARTER               | MEMBER GROWTH NET GOAL | MEMBER GROWTH ACTUAL | DROPPED MEMBERS ACTUAL (including transfers) |
| JULY/AUG/SEPT         | 30                     | 449                  | 251  |
| OCT/NOV/DEC           | 60                     | 471                  | 348  |
| JAN/FEB/MAR           | 35                     | 303                  | 38   |
| APR/MAY/JUNE          | 15                     | 454                  | 1,527  |

GOALS AND ACTUAL NEW CLUBS CUMULATIVE



- - CURRENT YEAR GOALS FOR NEW CLUBS
- - CURRENT YEAR ACTUAL NEW CLUBS
- ▲ - LAST YEAR ACTUAL NEW CLUBS

GOALS AND ACTUAL MEMBERS CUMULATIVE



- - MEMBER GROWTH NET GOAL
- - MEMBER GROWTH ACTUAL
- ▲ - LAST YEAR MEMBERSHIP ACTUAL

|                        |   |                                       |
|------------------------|---|---------------------------------------|
| DROPPED CLUBS: 19      | 167 CLUBS OF 332 ADDED 1 OR MORE NEW MEMBERS              | <b>GENDER DISTRIBUTION</b>            |
|                        |   | MALE 4,042 (77.70%)                   |
|                        |   | FEMALE 1,160 (22.30%)                 |
| <b>DROPPED MEMBERS</b> | <a href="#">CLICK HERE FOR CUMULATIVE MEMBERSHIP DATA</a> | TOTAL FAMILY UNIT MEMBERS 4,041       |
| DECEASED 12            |   | FAMILY MEMBERS PAYING HALF DUES 3,025 |
| CLUB CANCELLED 200     |   |                                       |
| OTHER 1,934            |   |                                       |
| <b>TOTAL 2,146</b>     |   |                                       |